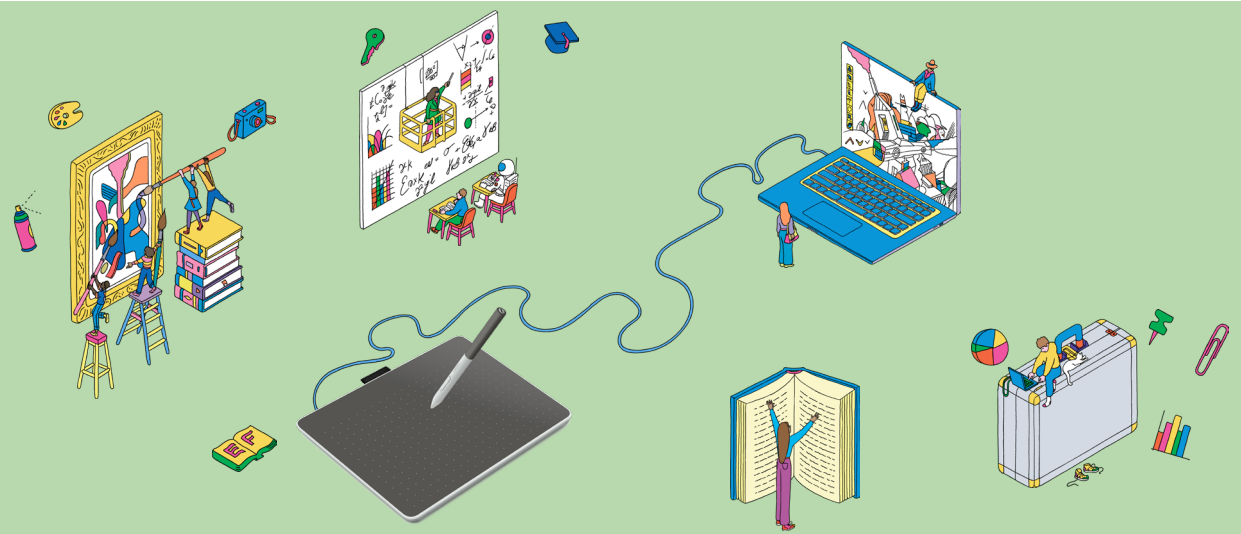


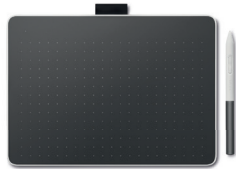
Wacom® One

See where it takes you

Wacom One is more than just the ideal **pen tablet** to express yourself in new ways. Like to digitally draw, paint, edit images, take notes, or collaborate? Select one of our two pen tablet models to experience the seamless precision of the pen as it glides across the ultra-responsive tablet, effortlessly bringing your artistic visions to life on your screen. Bonus software, tutorials and exciting community experiences included. There is no limit to what you can do.



Specifications



Wacom One M
Pen tablet



Wacom One S
Pen tablet

Active area size	8.5 x 5.3-inch / 216 x 135 mm (similar to A5)	6.0 x 3.7-inch / 152 x 95 mm (similar to A6)
Surface	High friction for pen-on-paper feeling	
Pen technology	Electromagnetic resonance technology (EMR), compatible with third party pens (LAMY, Staedtler, ...)	
Pen type	Pressure-sensitive, cordless, battery-free	
Pen Buttons	2 x (individual button assignment)	
Connectors	1 x USB Type-C, Bluetooth 5.1	
Dimensions L x W x H (mm)	252 x 181 x 8 mm	188 x 141 x 8 mm
Product weight (kg)	350 grams	200 grams

Strengths of pen tablets

Super thin & light for mobile use

Perfect for traveling as it easily fits in a bag, or on a desk

Easy connection with your computer or smartphone

Quick set-up allows one to get started quickly and easily

Ergonomic alternative to a computer mouse

Helps prevent Repetitive Strain Injury (RSI)

Entry-level devices to enjoy premium pen experience

Wacom's best value proposition

